

**STANDARD FLOW**

**FECON®**



# FORESTRY MULCHER

**FECON.COM**

**800 528 3113**

# 50" STANDARD FLOW MULCHER SPECIFICATION

## FECON Bull Hog® Standard Flow Mulching Head SSL & CTL

Model	VM5015
Working Width	50"
Overall Width	61"
Weight	1,370 lbs
Flow Range	17-27 gpm
Max Pressure	4,000 psi
Max Horsepower	75 HP
Number of Tools	22

**STAY BACK 300 FT/19**

# MAKE IT HAPPEN

## ON THE FARM

- ✦ Clearing crop perimeters allows for additional sunlight exposure and results in more productive crop growth
- ✦ Clear fence rows to keep machinery from being damaged during planting, maintenance or harvest
- ✦ Complete vegetation removal down to ground level to avoid potential livestock injuries

## RESIDENTIAL LANDSCAPING

- ✦ General vegetation management
- ✦ Fire prevention – create “defensible space”

## RENTALS

- ✦ Easy to transport mulching head without CDL
- ✦ Adaptable to any standard flow SSL/CTL

## FEATURES

- ✦ Efficiently mulch up to 5” material with the split ring rotor with knife tools
- ✦ Compact body design ensure carrier is agile in the woods
- ✦ Hinged motor cover to easily service key components

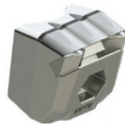
## TOOL OPTIONS

**Cubit Knife**  
standard



Double sided and easily flipped for a brand new cutting edge. This tool is faster at cutting, resulting in a finer finished product. A tapered tool body allows chip material to flow efficiently.

**Cubit Carbide**



Versatile tool for shredding material and improved durability. Ideal for applications that require ground engagement.

## ADD ONS

### **CONSIDER FECONS® HYDRAULIC COOLER**

Designed to be mounted on CTL and Skid Steer rooftops, our hydraulic cooler enhances the performance of the carrier by maintaining the hydraulic fluid at optimal temperature and viscosity.

### **FECON® 1/2" POLYCARBONATE DOOR WINDSHIELD**

Form-fit 1/2" Polycarbonate Windshield required for mulching applications. Our replacement windows are formed to duplicate the OEM glass shape.



# MAKE IT HAPPEN

# FECON®

**STAY BACK 300 FT/90 M**

## STANDARD FLOW

[fecon.com](http://fecon.com)

800 528 3113

[sales@fecon.com](mailto:sales@fecon.com)

+1 513 696 4430

Whether you are buying, renting, or servicing your mulching equipment, FECON has solutions that focus on your success. Operator driven design with a global network that is woven into every product.



- Operators cab must be protected with both properly maintained 1/2" LEXAN® Glass (or equal) and falling object protection.
- Certain guarding and features may have been removed for illustrative purposes, always run with proper guarding.
- Weights may vary based on options.
- Specifications subject to change without notice.
- Photographs may have been altered for marketing purposes.
- Always insure that your carrier manufacturers safety features (including falling object protection, and roll-over protection) meet your job safety requirements.
- Safety is the responsibility of the operator.
- Pictures may contain optional accessories.