

EXC ATTACHMENTS

FECON[®]



**FORESTRY
ATTACHMENTS**

FECON.COM

800 528 3113

BULL HOG® MULCHERS

5-10 TON EXCAVATOR

VMX36 & VMX50



- 12 - 40 Flow Range (gpm)
- 36" and 50" cutting widths
- 850 lbs - 1,050 lbs
- Efficiently mulch up to 5" material
- Rated to 4,000 PSI
- Variable Displacement Motor
- Fecon Split Ring Rotor w/ Cubit Knife Tools
- Adjustable Hydraulics to Match Carrier Flow and Pressure

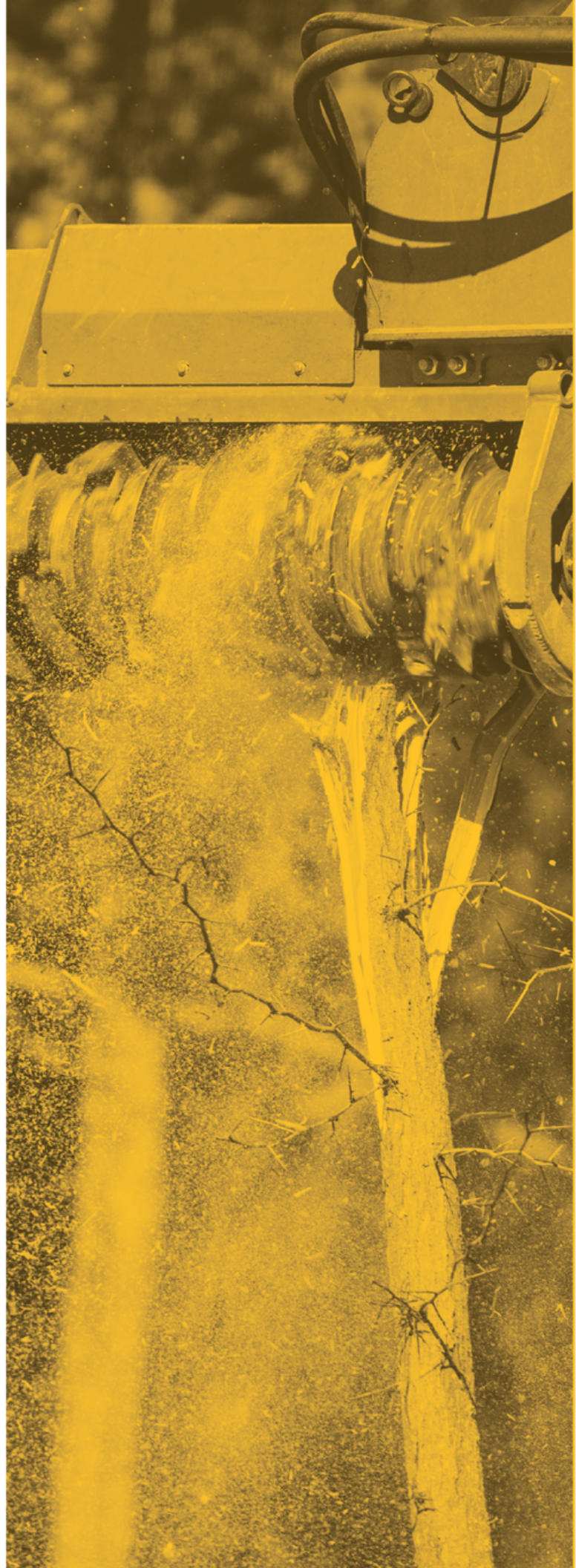
8-15 TON EXCAVATOR

VCM36



- 17-40 Flow Range (gpm)
- 36" cutting widths
- 1450 lbs
- Efficiently mulch up to 6" material
- Rated to 6,000 PSI
- Variable Displacement Motor
- Fecon Gringing Technology (FGT) Rotor with Double Carbide Tools
- Adjustable Hydraulics to Match Carrier Flow and Pressure

DURABILITY
PERFORMANCE
VERSATILITY



ROTORS



FGT

Versatile smooth drum rotor system with tooling options for various application. Lacing pattern maximizes energy transfer into the material while optimizing tool wear.

Double Carbide standard



The perfect balance of performance, wear life, and durability, the Double Carbide is the standard tool offered in FGT rotors to work in a wide range of applications.

Viking Sword®



Double sided and easily flipped for a brand new cutting edge. This tool is faster at cutting, resulting in a finer finished product. A tapered tool body allows chip material to flow efficiently.

High Abrasion



Carbide wear plates are added to the body of the Standard Double Carbide tool, extending useful life in highly abrasive conditions by slowing wear to the body.

Stone Tool



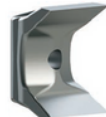
Ideal for areas where rock cannot be avoided, the FGT Stone Tool provides superior durability and wear life in more severe conditions.



DCR

Depth Control Rotor limits tool bite which creates constant chip sizing and less HP draw from carrier. Ideal for stringy/fibrous material or when a finer finished product is required.

Viking Axe® standard



Double sided and easily flipped for a brand new cutting edge. The Viking Axe has a thick knife edge optimized for cutting stringy and fibrous vegetation.

Viking Sword®



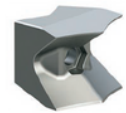
Double sided and easily flipped for a brand new cutting edge. This tool is faster at cutting, resulting in a finer finished product. A tapered tool body allows chip material to flow efficiently.



FMX

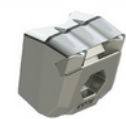
Split ring rotor with knife tools designed to efficiently mulch while maintaining higher rotor RPMs.

Cubit Knife standard



Double sided and easily flipped for a brand new cutting edge. This tool is faster at cutting, resulting in a finer finished product. A tapered tool body allows chip material to flow efficiently.

Cubit Carbide



Versatile tool for shredding material and improved durability. Ideal for applications that require ground engagement.

BHP270

- Equipped with Fecon Power Management
- Dramatically improves engine response/recovery
- Sustained peak grinding power
- Reduced fuel consumption
- Optimized operator feedback
- Limited stalling
- Quicker recovery
- Maximized productivity
- Modular design for BHP270

Mulch brush, branches, slash, standing and fallen trees, root balls and stumps faster and more effectively than before!

Bull Hog Excavator Mulchers are often powered by the excavator's hydraulic system. However, when absolute maximum productivity is required a Bull Hog Power Pack provides the ultimate solution.



- No carbide teeth to replace
- Easy cleanup
- Safer work zone
- 3 Models available:
 - Compact Stumpex
 - SSL/CTL Stumpex
 - 12-20 Excavator Stumpex
- Standard 2-Speed Hydraulic Motor

EXCAVATOR ATTACHMENTS

fecon.com

800 528 3113

sales@fecon.com

+1 513 696 4430

Whether you are buying, renting, or servicing your mulching equipment, FECON has solutions that focus on your success. Operator driven design with a global network that is woven into every product.



- Operators cab must be protected with both properly maintained 1/2" LEXAN® Glass (or equal) and falling object protection.
- Certain guarding and features may have been removed for illustrative purposes, always run with proper guarding.
- Weights may vary based on options.
- Specifications subject to change without notice.
- Photographs may have been altered for marketing purposes.
- Always insure that your carrier manufacturers safety features (including falling object protection, and roll-over protection) meet your job safety requirements.
- Safety is the responsibility of the operator.
- Pictures may contain optional accessories