

HIGH PERFORMANCE ROTORS

BUILT FECON TOUGH



FGT

Versatile smooth drum rotor system with tooling options for various application. Lacing pattern maximizes energy transfer into the material while optimizing tool wear.

Double Carbide standard



The perfect balance of performance, wear life, and durability, the Double Carbide is the standard tool offered in FGT rotors to work in a wide range of applications.

Viking Sword®



Double sided and easily flipped for a brand new cutting edge. This tool is faster at cutting, resulting in a finer finished product. A tapered tool body allows chip material to flow efficiently.

High Abrasion

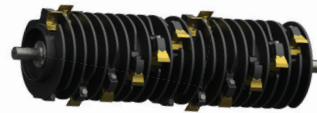


Carbide wear plates are added to the body of the Standard Double Carbide tool, extending useful life in highly abrasive conditions by slowing wear to the body.

Stone Tool



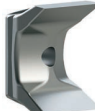
Ideal for areas where rock cannot be avoided, the FGT Stone Tool provides superior durability and wear life in more severe conditions.



DCR

Depth Control Rotor limits tool bite which creates consistent chip sizing and less HP draw from carrier. Ideal for stringy/fibrous material or when a finer finished product is required.

Viking Axe® standard



Double sided and easily flipped for a brand new cutting edge. The Viking Axe has a thick knife edge optimized for cutting stringy and fibrous vegetation.

Viking Sword®



Double sided and easily flipped for a brand new cutting edge. This tool is faster at cutting, resulting in a finer finished product. A tapered tool body allows chip material to flow efficiently.



FMX

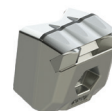
Split ring rotor with knife tools designed to efficiently mulch while maintaining higher rotor RPMs.

Cubit Knife standard



Double sided and easily flipped for a brand new cutting edge. This tool is faster at cutting, resulting in a finer finished product. A tapered tool body allows chip material to flow efficiently.

Cubit Carbide



Versatile tool for shredding material and improved durability. Ideal for applications that require ground engagement.

BULL HOG®

fecon.com

800 528 3113

sales@fecon.com

+1 513 696 4430



Whether you are buying, renting, or servicing your mulching equipment, FECON has solutions that focus on your success. Operator driven design with a global network that is woven into every product.

BULL HOG®

FECON®



FORESTRY MULCHERS

FECON.COM

800 528 3113

- Operators cab must be protected with both properly maintained 1/2" Polycarbonate Glass (or equal) and Falling Object Protection.
- Certain guarding and features may have been removed for illustrative purposes, always run with proper guarding.
- Weights may vary based on options.
- Specifications subject to change without notice.
- Photographs may have been altered for marketing purposes.
- Always insure that your carrier manufacturers safety features (including Falling Object Protection, and Roll-Over Protection) meet your job safety requirements.
- SAFETY IS THE RESPONSIBILITY OF THE OPERATOR.
- Pictures may contain optional accessories

THE BULL HOG® ADVANTAGE

DURABILITY

- Industry leading severe-duty body construction.
- Engineered and built to withstand all types of mulching conditions.
- High Strength steel materials and quality welding process

PERFORMANCE

- Variable 2 speed motor automatically adjusts, maximizing rotor speed & torque to changing material loads.
 - ✓ For lighter material loads, higher RPM means more bites per second and finer material sizing.
 - ✓ With heavier material, the Bull Hog® delivers more rotor torque, keeping the rotor turning when other heads may stall.
- Field tested and proven to be the most productive heads available.

VERSATILITY

- Available from 50 - 600HP, Bull Hog® mulchers are designed for any machine and application.
- Available for Compact Track Loaders, Skid Steers, 5-45 ton Excavators, PTO Tractors and more!
- With various rotor and tool options, Bull Hogs® can be configured for regional or specific jobsite conditions.



CLEAR THE WAY WITH FECON® MULCHING EQUIPMENT



SKID STEER / CTL BULL HOG®

HINGED MOTOR COVERS

- Easy service
- Access without tools

PUSH BAR OPTIONS

- Pin-on
- Serrated ears direct material to better feed the mulcher

BOLT-ON SKID SHOES

- AR400 steel
- Less plowing of material for more uniform final results



HYDRAULIC BULL HOG®

BODY CONSTRUCTION

- Severe duty
- Standard duty
- Durable long-lasting performance

PUSH BAR

- Rugged fixed position
- Optional hydraulic tilting

BOLT-ON SKID SHOES

- AR400 steel
- Can be adjusted for desired ground engagement

TRAP DOOR

- Helps contain debris
- Achieve finer sizing

FECON Bull Hog® Mulching Head SSL & CTL

	VM602SS
Working Width	61"
Overall Width	76"
Flow Range	30-45 gpm
Max Pressure	6,000 psi
Max Horsepower	120 HP
Number of Tools	30

FECON Bull Hog® Mulching Head Hydraulic Ground Large Body

	VM8620
Working Width	86"
Overall Width	101"
Flow Range	50-150 gpm
Max Pressure	6,000 psi
Max Horsepower	300 HP
Number of Tools	48



EXCAVATOR BULL HOG®

BODY CONSTRUCTION

- 15 - 45 ton excavators BH40EXC, BH80EXC & BH200EXC
- 3/4" steel body construction
- SEVERE duty bearings
- Variable displacement

MOUNTS

- Quick attach or pin-on
- Easily change mounts for different excavators with the bolt-on interface

ROTOR EXPOSURE

- Cut through standing trees
- Mulch slash piles
- Grind to the surface

FECON Bull Hog® Excavator / Boom Mulching Head 5-10 Ton

	VMX36	VMX50
Excavator Class in Tons	5-10	5-10
Working Width	36"	50"
Overall Width	44"	58"
Flow Range	12-40 gpm	12-40 gpm
Max Pressure	4,000 psi	4,000 psi
Number of Tools	18	22

FECON Bull Hog® Excavator / Boom Mulching Head 8-15 Ton

	VCM36
Excavator Class in Tons	8-15
Working Width	36"
Overall Width	57"
Flow Range	17-40 gpm
Max Pressure	6,000 psi
Number of Tools	18

